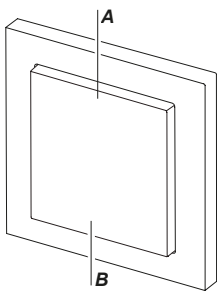
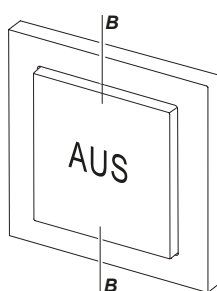


Models

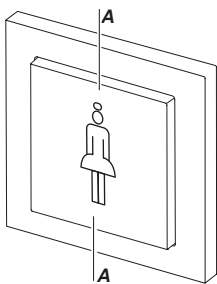
SINGLE ROCKER



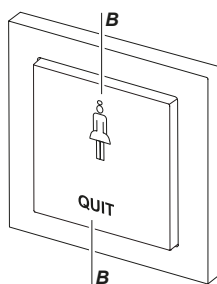
RTS22E5002A12
ON/OFF or PULSE



RTS22E5001B02
AUS

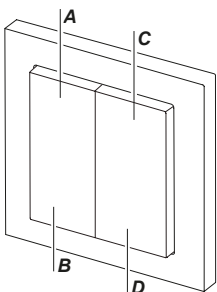


RTS22E5001A05
CALL white button
RTS22E5001A04
CALL red button



RTS22E5001B01
QUIT

DOUBLE ROCKER



RTS23E5004A12
ON/OFF (2x) or PULSE (4x)

Technical Details

Frequency:	868.30 MHz
Radiated power:	1.29 mW
Modulation:	FSK
Coding:	Easywave POTA
Power supply:	1x 3-V-battery, CR2032
Oper. Temperature:	-20 °C to +60 °C
Range:	free-field: approx. 150 m buildings: approx. 30 m
Dimensions:	
Mounting plate	71/71/1.8 mm
Cover frame	80/80/9.4 mm
Single rocker	55/55/9 mm
Double rocker	27/55/9 mm
Weight:	44.0 g (incl. battery and cover frame)

Scope of Delivery

Transmitter module, battery CR2032, mounting plate, adhesive pads, rocker(s), cover frame, operating instructions

Intended Use

Use the radio wall switch RTS22/23 only in dry indoor rooms to switch Easywave receivers.

The manufacturer shall not be liable for any damage caused by improper or non-intended use.

Safety Advice



Before using the product, carefully read through the operating instructions!

- Also note the operating instructions of the receiver(s)!
- The radio wall switch may only be operated within sight of the devices to be controlled! Otherwise persons could be placed in danger!
- Do not make any unauthorized alterations or modifications to the radio wall switch!
- Have faulty radio wall switches checked by the manufacturer!
- Keep the batteries out of the reach of children!

Function

The wall switches are suitable for surface-mounting in dry rooms.

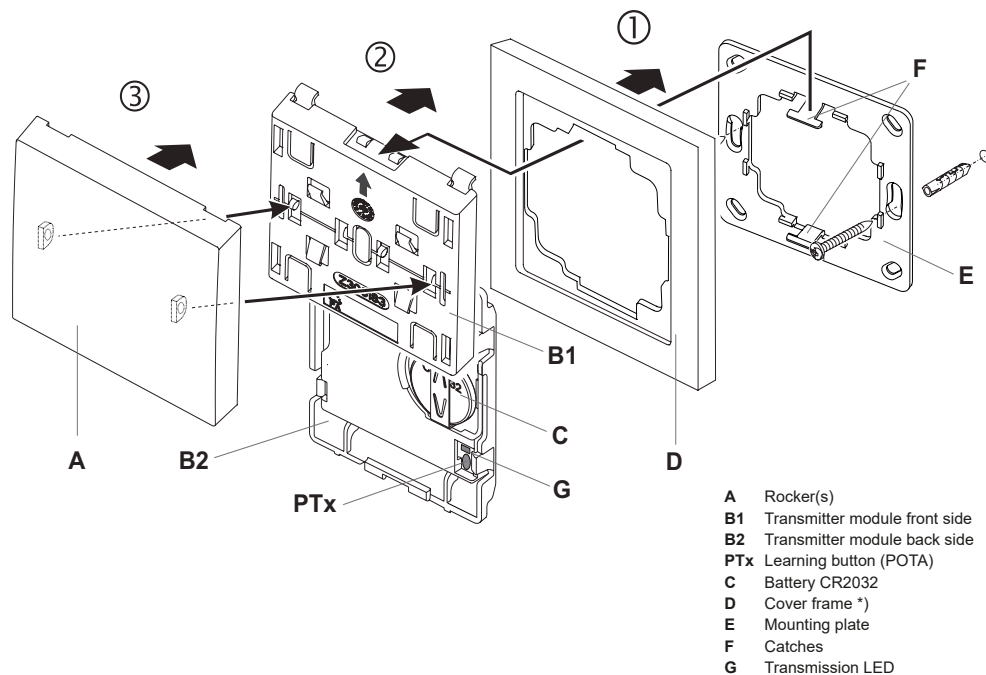
A cover frame is included in the scope of delivery. Cover frames with a cut-out dimension of 55 x 55 mm produced by various other manufacturers can also be used. Please note the compatibility list for transmitters of format 55.

By pushing a button an Easywave code (A, B, C or D) is transmitted and the connected Easywave receivers are switched according to the selected operating mode:

- **ON** (A/C) or **OFF** (B/D)
- **PULSE** (A/B/C/D)
- **UP** (A/C) or **DOWN** (B/D)
- **UP** (A) / **STOP** (C/D) / **DOWN** (B)

Start-Up

1. Screw or stick the mounting plate to the installation site with screws and dowels or the adhesive pads.
2. Insert the battery into the transmitter module (see chapter „Insert/change battery“).
3. Place the cover frame onto the mounting plate and snap the transmitter module to the catches on top and bottom. **The arrow on the transmitter module has to point upwards.**
4. Plug the rocker(s) onto the transmitter module.
5. Program the transmission code into the receiver. Please read the operating instructions supplied with the receiver.



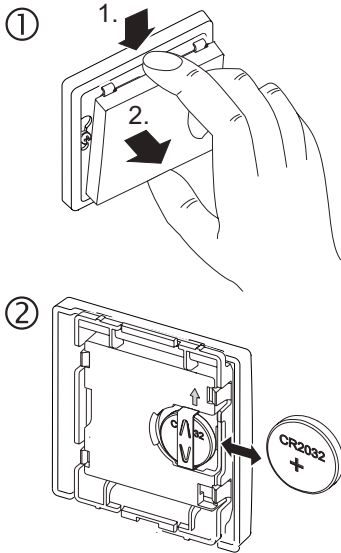
- A Rocker(s)
- B1 Transmitter module front side
- B2 Transmitter module back side
- PTx Learning button (POTA)
- C Battery CR2032
- D Cover frame *)
- E Mounting plate
- F Catches
- G Transmission LED

*) If necessary, the cover frame can be replaced with frames from other manufacturers with a cutout size of 55x55 mm.

Insert / change battery

1. Lever off the transmitter module from the mounting plate.
2. Replace the battery. Only use batteries of the type CR2032. **Make sure the polarity is correct. The positive pole has to be visible!**
3. Place the transmitter module back onto the catches of the mounting plate.

Note: The coding of the transmitter is preserved even if there is no voltage supply. You do not need to program the code into the receivers again after a battery change.



Remote learning function

The wall switch is equipped with the POTA (Programming Over The Air) remote learning function. This function can be used to reprogram a built-in and no longer accessible receiver if the wall switch has been programmed into it.

To find out whether a receiver supports this function, please refer to its operating instructions.

Trouble Shooting

If the receiver does not react to the radio wall switch:

- Change the battery.
- Check that the wireless connection at the installation site is not impaired between the radio wall switch and the receiver.
- Program the transmission code into the receiver again.
- Other wireless devices using the same frequency and working in direct proximity may interfere with the device.

Disposal

Waste electrical products and batteries may not be disposed of with household waste!

Dispose of the waste product via a collection point for electronic scrap or via your specialist dealer.

Dispose of used batteries in a recycling bin for batteries or via the specialist trade. Put the packaging material into the recycling bins for cardboard, paper and plastics.



Warranty

Within the statutory warranty period we undertake to rectify free of charge by repair or replacement any product defects arising from material or production faults.

Any unauthorized tampering with, or modifications to, the product shall render this warranty null and void.

Conformity



Hereby, ELDAT EaS GmbH declares that the radio equipment type RTS22 and RTS23 is in compliance with Directive 2014/53/EU.

The full text of the EU declaration of conformity is available at the following internet address: www.eldat.de

Service

If, despite correct handling, faults or malfunctions occur or if the product was damaged, please contact the company at the address below:

ELDAT EaS GmbH

Schmiedestraße 2

15745 Wildau

Germany

Phone: + 49 3375 9037-310

Internet: www.eldat.de

E-Mail: info@eldat.de