

RGD03 DALI gateway with bus power supply

The Easywave Dali Gateway RGD03 serves as a power supply for a DALI bus and enables controlling of up to 32 DALI devices. All programmed Easywave transmitters trigger the same function. The transmitter buttons are automatically assigned to functions. A maximum of 200 mA can be provided on the bus for DALI devices.

In factory settings, the operating mode “DIMMING 2-button operation” is pre-configured as a broadcast to all DALI devices and can be used without further configuration.

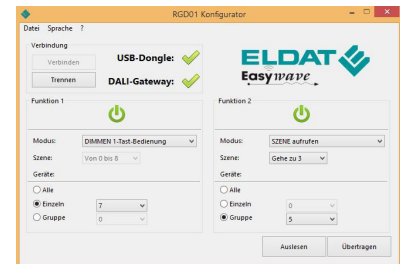
If other operating modes are to be used, the configuration must be adapted on a Windows PC, using the separately available start-up cable and the “RGD03_Configurator” software



RGD03E5002A01-01K

Technical specifications

Coding	Easywave Up to 32 transmitters can be programmed.
Frequency	868.30 MHz
Channels	1 (2 in 1-button mode)
Range	typically 150 m in good free-field conditions
Power supply	230 V ~ 50 Hz
Operating modes	ON/OFF (1-button operation) ON/OFF (2-button operation) DIMMING (1-button operation) DIMMING (2-button operation)* DEADMAN (1-button operation) go to scene jump through scenes * factory setting
Power consumption	21 mA
Operating temperature	-20 °C to +60 °C
Dimensions	46 x 46 x 25 mm



RGD01 configurator

Scope of delivery

- DALI gateway with
- bus power supply
- Operating manual

Accessories (optional)

RGD-ACC-01-00K	Start-up cable, length 3 m and software CD
----------------	--

Models

Product numbers	Description
RGD03E5002A01-01K	DALI gateway with bus power supply, 2-channel